

Always. Reliable. Tight.



MAINTAINING THE INTEGRITY OF WATERPROOFING UNDER A BASE SLAB

QLD STATE NETBALL STADIUM – BRISBANE

SOLUTION FOR CONNECTING DUCTS TO WATERPROOFED WALL



HSI 150-DFK Wall flange and sealant was placed over the core-hole and is fixed using watertight screws and dowels.



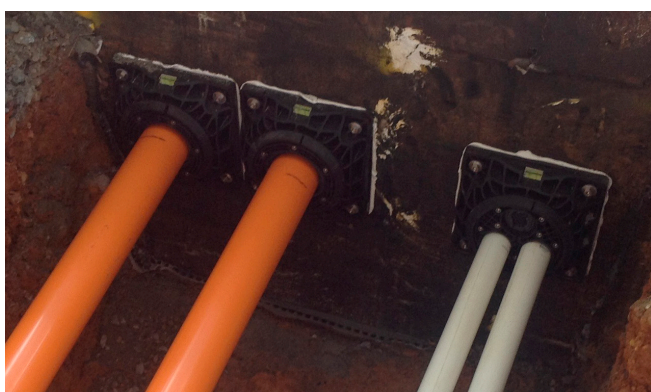
HSI system cover is then simply attached via the bayonet system to the DFK and tightened by the red clamping nut.



Conduit is then connected using the rubber connection sleeve that comes with the system cover.



KME trialled three to begin with, the builder then approved the system and completed another layer of the membrane. New core-holes were drilled then another twenty two HSI 150-DFK and system covers were installed after early success and ease of installation.






More services were added to the project via smaller conduits. Our DG system was chosen as it enabled KME to connect multiple entries using one seal.

PROJECT INFORMATION

Location	Queensland State Netball Stadium Corner of Mains & Kessels Road Nathan QLD 4111
Building owner	Stadiums Queensland Cnr Castlemaine and Chippendall Streets Milton, QLD, 4064
Installation company	KME Services (Builder - Hansen Yunken) Klenner Murphy Electrical Pty Ltd Unit 20/6 Maunder Street Slacks Creek, 4127 Brisbane Qld

SOLUTIONS BY HAUFF-TECHNIK

Specification	Electrical and data services enter the building via conduits passing through a core filled block wall with a membrane waterproofing into the Main Switchboard Room.	
The challenge	The challenge was maintaining the integrity of the waterproofing as once the services were connected through the wall, a slab would cover the ground above and would no longer be accessible.	
The solution	Solution was for the client to arrange the wall to be waterproofed by the other contractor, then core-hole through the membrane for the required service entries. Hauff-Technik DFK Wall Flange was then drilled into the surrounds of the core-hole using water tight screws and added sealant. In just a couple of minutes Hauff Technik system cover was attached to the DFK or DG and KME Services connected the conduit to the system cover.	
Products used	HSI 150 – DFK	
	HSI 150-DG	
	KES-M 150-D	

Hauff-Technik GmbH & Co. KG

Robert-Bosch-Straße 9
89568 Hermaringen, GERMANY

Tel. +49 7322 1333-0
Fax +49 7322 1333-999

office@hauff-technik.de